

# Achieving Your Data Utopia



## Streamlining Your Supply Chain with Powerfleet Unity

In today's data-rich landscape, logistics companies managing mixed fleets face challenges, such as:

### Data Overload

Managing diverse data sources across mixed fleets complicates capture, processing, and interpretation.

### System Fragmentation

Siloed systems hinder holistic analysis and decision-making, leading to data latency and inaccuracies.

### Operational Inefficiencies

Dealing with multiple suppliers adds complexity to operations and decision-making.

## Data Challenges in Logistics

With Unity, Powerfleet transforms supply chain management by centralizing data streams, applying AI innovation, and simplifying integration:

Unity excels in:

### Centralizing Data Streams

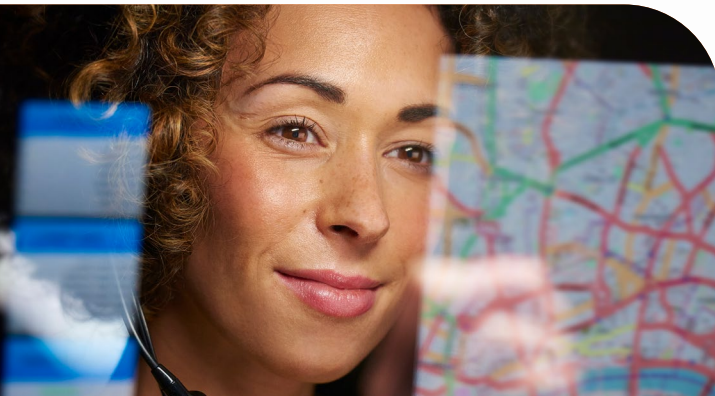
Ingests data from various sources for a unified platform.

### Artificial Intelligence Innovation

Utilizes AI and ML for actionable insights.

### Simplifying Integration

Read the case study below to learn more about Powerfleet Unity's real-world applications and success.



Read the case study below to learn more about Powerfleet Unity's real-world applications and success.

# Case Study: Transforming Enterprise Drayage and Intermodal Logistics

## About the Company

The company is the largest marine drayage provider in the United States, boasting an extensive fleet of trucks and chassis, complemented by a strategically integrated network of smart depots.

## The Challenge

The COVID-19 pandemic's electronic component shortages posed challenges for fleet tracking. Integrating multiple telematics solutions heightened operational complexity, straining resources and diverting focus from core activities.

## Unity's Transformative Impact

To streamline operations and integrate diverse telematics vendors, we adopted Powerfleet's Unity Platform.

## Why Unity?

### Third-Party Data Ingestion

Rapid and robust data ingestion from various vendors and sources ensures high performance and scalability.

### Unified Fleet Management

A seamless platform for managing diverse fleet data, eliminating complex IT integration.

### Event Engine

AI and ML-driven insights facilitate operational intelligence, aiding tracking, compliance, and inventory management.

### Seamless Business Integration

Extensive APIs simplify data exchange, reducing customer-side IT demands.

### Service Reliability

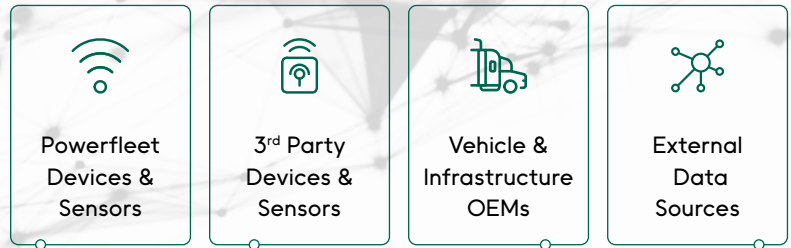
Powerfleet offers superior monitoring and customer support, ensuring operational continuity.



STEP 1

## Device-Agnostic Data Ingestion

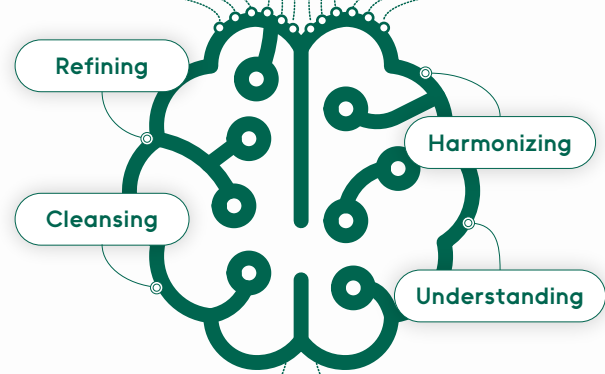
Ingesting data from all your disconnected data sources, including IoT devices, 3rd party devices, OEMs, and business systems.



STEP 2

## Data Transformation

Applying AI and ML to transform that data into real-world, decision-grade insights.



STEP 3

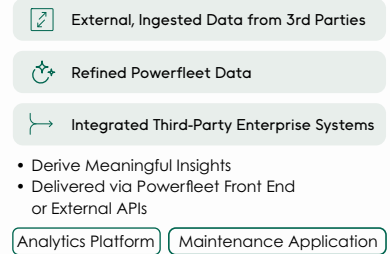
## Business Insights

Unity enables comprehensive visualization through a single interface and seamlessly integrates with business systems via open APIs, enhancing decision-making.

### Data-Powered Applications



### Unified Operations & Services



## Business Benefits

Partnering with Powerfleet streamlined data integration and boosted operational efficiency, paving the way for sustainable growth by minimizing the need for additional staffing and IT investments.

Powerfleet (Nasdaq: PWFL; JSE: PWR; TASE: PWFL) is a global leader in the artificial intelligence of things (AIoT) software-as-a-service (SaaS) mobile asset industry. With more than 30 years of experience, Powerfleet unifies business operations through the ingestion, harmonization, and integration of data, irrespective of source, and delivers actionable insights to help companies save lives, time, and money. Powerfleet's ethos transcends our data ecosystem and commitment to innovation; our people-centric approach empowers our customers to realize impactful and sustained business improvement. The company is headquartered in New Jersey, United States, with offices around the globe. Explore more at [www.powerfleet.com](http://www.powerfleet.com).