

Unity APIs

Streamline Data Integrations and
Empower Informed Decision-Making

Overview

In today's fast-paced business landscape, organizations face significant challenges when it comes to exporting data manually. This process is not only time-consuming but also prone to errors, potentially impacting critical business decisions. Recognizing the universal need for efficient and reliable insights, we present Unity APIs, a suite of tools that streamline the way our customers access insights and make informed choices. Unity APIs empower businesses with real-world, nearly real-time, and decision-grade insights. By leveraging these tools, organizations gain invaluable visibility into their people, maintenance operations, and performance metrics. With seamless data integration and comprehensive reporting capabilities, Unity APIs save valuable time and ensure the accuracy of vital information. As a result, businesses can make informed decisions promptly, improving efficiency and driving growth.



Solution at a Glance

Unity APIs (Application Program Interfaces) were developed to assist our customers and partners in creating seamless integrations with our solutions, enabling them to generate comprehensive and insightful KPI dashboards. These APIs encompass a set of data exchange endpoints, providing customers with a standardized, repeatable, and dependable process for transmitting to, and receiving data from Powerfleet. These exchanges are commonly employed to facilitate administrative tasks for customers who utilize other solutions applications, or to combine Powerfleet data with other business application information in their own analytics platforms. The APIs are designed following REST (Representational State Transfer) principles with JSON-encoded responses and utilize OAuth2 authentication for secure and authorized access.

With Unity APIs, you have the freedom to choose precisely what you need from the offerings that best align with your requirements. Whether you're seeking specific data points, real-time updates, or historical records, our APIs enable tailored integration to meet your unique demands.



Usage/Trip APIs

- Reduced time allocation to tasks
- Task and route optimization
- Automated performance review (time clock validation)



People API

- Allows for a single record of truth (the HRIS)
- Automates data synchronization: HRIS updates reflect seamlessly in Powerfleet, cutting administration costs
- Instant HRIS-to-Forklift Gateway (VAC) updates for real-time vehicle access changes
- Validate payroll by aligning vehicle access/driving hours with time-clock records



Events/Checklist API

- Automated work order creation
- Downtime analysis
- Prescriptive vehicle replacement
- Predictive parts requirements
- Impacts and high-risk behavior trends

Challenges Resolved

- Eliminate duplicate data entry
- Automate maintenance work order creation
- Combine telematics data and other data sources in a single data lake
- Comprehensive analytics, configurable dashboards

Benefits

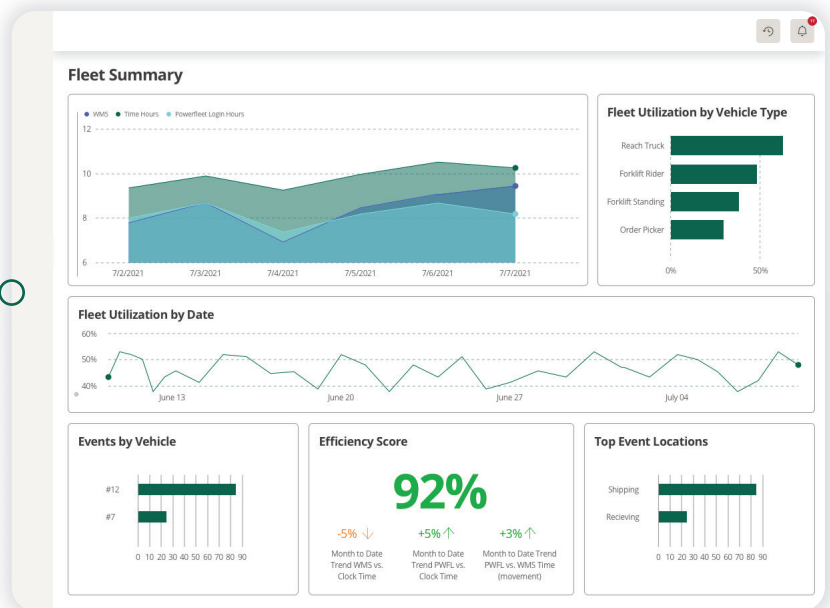
- Standardized series of API endpoints
- Industry standard developer toolkit - reduces time and effort of the technical developer teams
- Enables more data points to be shared
- Supports future planning for additional datapoints
- Acknowledgment process to prevent data duplication
- Automated monitoring and diagnostics
- Scalable data sets in easy-to-use end points

Unlock the Power of KPI Widgets: Transform Your Decision-Making Process

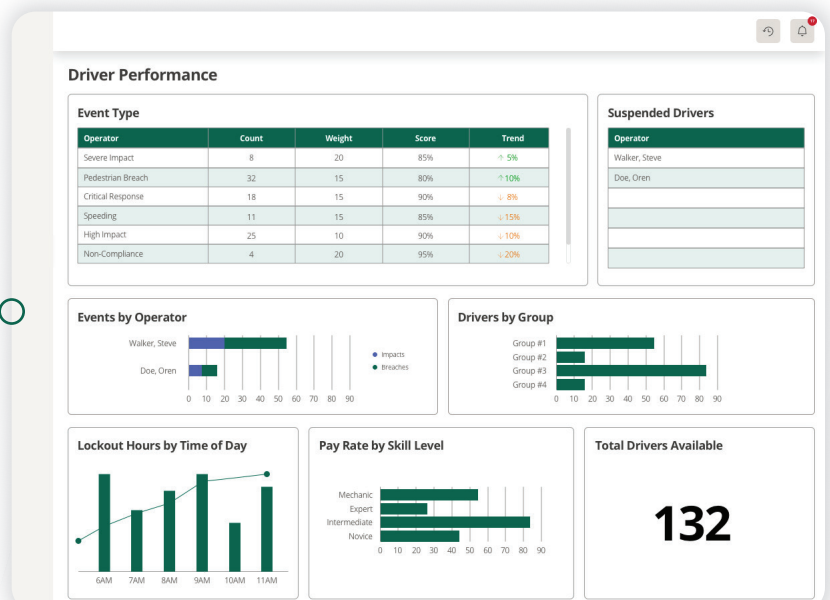
Harness the power of data-driven decision-making with our powerful APIs, empowering you to create custom widgets with limitless possibilities that build insightful dashboards for data-driven choices in your operations. Visualize and analyze key metrics to ensure you're optimizing performance and identify areas for improvement. Seamlessly integrated with all your existing systems, our APIs connect your planned activities and goals to the actual happenings, providing a comprehensive view of your business like never before. Unlock the potential of these example widgets and gain the competitive edge you need to succeed.

Real-world Usage Examples: Illustrating How Customers Have Benefited from Unity APIs

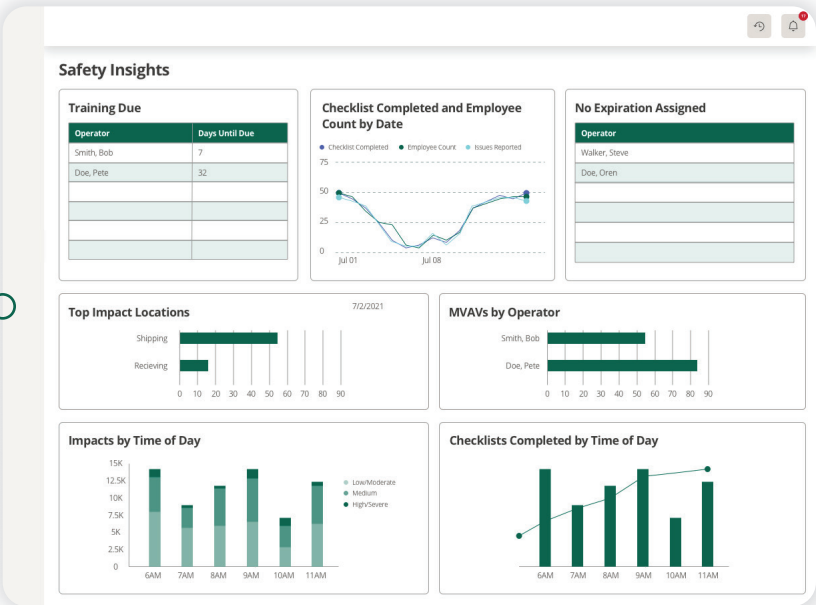
Fleet Summary



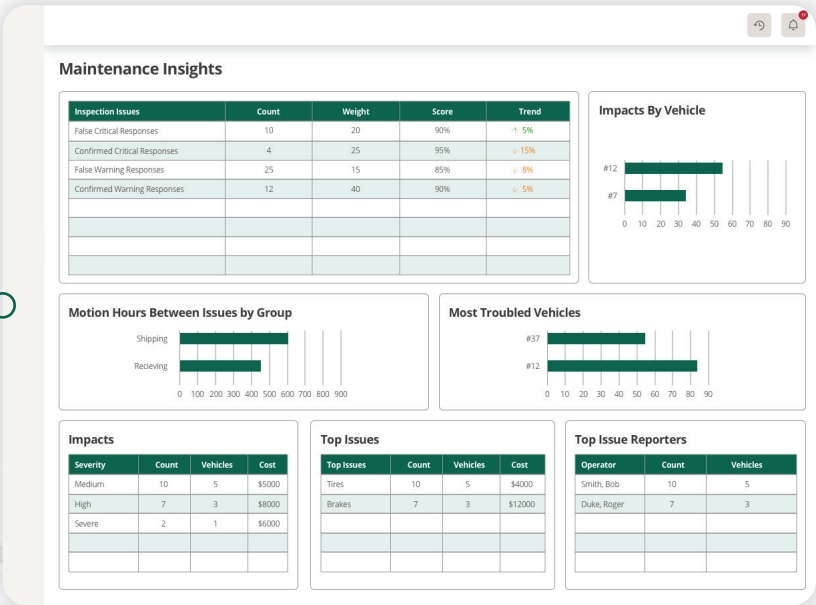
Driver Performance



Safety Insights



Maintenance Insights



Powerfleet (NASDAQ: PWFL; TASE: PWFL) is a global leader of internet of things (IoT) software-as-a-service (SaaS) solutions that optimize the performance of mobile assets and resources to unify business operations. Our data science insights and advanced modular software solutions help drive digital transformation through our customers' and partners' ecosystems to help save lives, time, and money. We help connect companies, enabling customers and their customers to realize more effective strategies and results. Powerfleet's tenured and talented team is at the heart of our approach to partnership and tangible success. The company is headquartered in Woodcliff Lake, New Jersey, with our Pointer Innovation Center (PIC) in Israel and field offices around the globe. For more information, please visit www.powerfleet.com.