

Solutions for Utilities and Telecommunication Fleets

Unlock Fleet Excellence with Complete Visibility into your Vehicles, Assets, and Workforces

Overview

In the utilities and telecommunication business, time is always of the essence. Ensuring your customers have the services that they rely on 24/7 – be it communication, power, or water – is critical and expected. Beyond inconvenience, disruption to these essential services can cause financial loss and reputational damage. To avoid these issues, your technical teams must reach their destinations safely and in a timely matter. Not to mention ensuring that it's all done in a compliant, cost-effective manner.

Efficiently managing your extensive and diverse fleet of vehicles and assets is key. This means reducing maintenance expenses, optimizing utilization, and minimizing fuel costs. Your fleet handles various tasks, including customer connections, infrastructure maintenance, and emergency responses, making it a complex puzzle. Ensuring field technicians' safety is paramount to avoid operational halts and on-road personnel risks.

Balancing divergent responsibilities, from scheduled appointments to rapid response, requires careful resource allocation to streamline operations. Outdated coordination methods, manual efforts, and vehicle utilization discrepancies result in inefficiencies and unnecessary costs.

Real-time location tracking is challenging due to diverse roles within the fleet, including field supervisors, operations managers, and dispatching superintendents, all aiming to optimize field crew efficiency, workforce management, and customer service.

Seamlessly coordinating customer appointments, infrastructure duties, and crisis responses remains an ongoing challenge, especially when managing shared or limited assets for specific tasks, further complicating operational efficiency. However, with the right technology and partner, these challenges become opportunities to set your business apart.

Solution at a Glance

Powered by unrivaled data insights, Powerfleet digitalizes operations through advanced automation from machine learning, simulation, and artificial intelligence (AI). Our fully agnostic fleet intelligence platform ingests, processes, and enriches data from every asset, vehicle, and person – all in a single pane of glass.

Supported by a world-renowned services team with nearly 30 years' experience. Powerfleet is purpose-built to meet the goals of your fleets. This includes:



Safety and Security

- Proactively address risky behaviors and leverage driver scorecards for driver coaching, reduce accidents, and safeguard field technicians' well-being.
- Streamline accident awareness and reconstruction with advanced analytics and real-time data, minimizing downtime and ensuring swift incident resolution.
- Safeguard valuable equipment, prevent theft, and minimize operational disruptions through real-time asset tracking capabilities.



Maintenance and Performance

- Data-driven insights based on live engine diagnostics, ensure proactive maintenance scheduling, reducing breakdowns and boosting efficiency.
- Instant notifications about engine fault codes and asset diagnostics helps you easily prioritize repairs.
- Real-time tracking and analytics enhance resource allocation, improving overall fleet performance.



Advanced Fuel Management

- Real-time insights into fuel consumption, enabling data-driven decisions to optimize fuel usage.
- Monitoring and alerts help address fuel theft issues promptly, safeguarding resources and reducing losses.
- Real-time coaching and alerts enhance driver fuel efficiency, leading to a substantial increase in fuel usage efficiency.



Regulatory Management and Compliance

- Streamline data collection and reporting for accurate and timely adherence to regulations.
- Effortlessly maintain comprehensive records with automated data capture, simplifying audits.
- Customize reporting to meet industry-specific compliance needs, ensuring efficient monitoring and documentation.



Visibility and Resource Management

- Accurate GPS tracking for efficient vehicle coordination through real-time tracking.
- Stay informed about critical events like geofence entry or exit, dormant vehicles, and unauthorized driving. Proactive monitoring of theft and asset misuse, thereby boosting fleet performance and efficiency and protecting your bottom line.
- Streamlined data for precise crew dispatch in appointments and emergencies.
- Integrated assets ensure efficient resource assignment, reducing inefficiencies and costs.



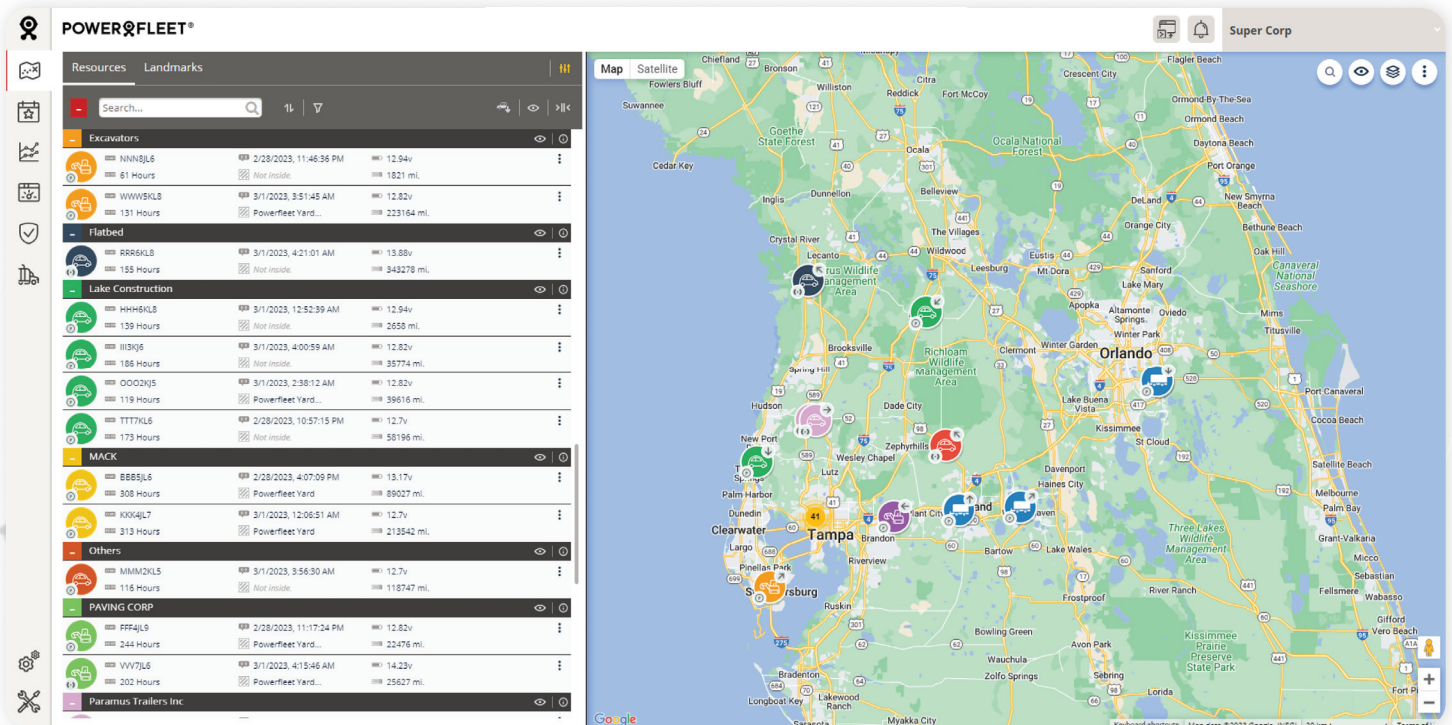
Sustainability

- Obtain data on carbon emissions, facilitating informed decisions for reducing environmental impact.
- Driver eco scoring enables gamification of sustainable driving habits, leading to lower fuel usage and improving sustainability efforts.
- Data-backed decisions enable a seamless transition to electric vehicles, aligning with ESG goals.

Results

With Powerfleet you have access to real-time, multi-dimensional KPIs tailored to your business. You're empowered with the insight to optimize operations, enhance your customer experience, and cut down on costs today, while advocating for the future of your fleet.

- Reduce safety incidents
- Boost employee morale
- Improve customer satisfaction
- Shrink operating costs
- Mitigate liability
- Reduce fuel costs
- Increase driver retention
- Increase longevity of assets
- Optimize asset, equipment and people utilization
- Protect brand reputation
- Achieve sustainability goals



Powerfleet (NASDAQ: PWFL; TASE: PWFL) is a global leader of internet of things (IoT) software-as-a-service (SaaS) solutions that optimize the performance of mobile assets and resources to unify business operations. Our data science insights and advanced modular software solutions help drive digital transformation through our customers' and partners' ecosystems to help save lives, time, and money. We help connect companies, enabling customers and their customers to realize more effective strategies and results. Powerfleet's tenured and talented team is at the heart of our approach to partnership and tangible success. The company is headquartered in Woodcliff Lake, New Jersey, with our Pointer Innovation Center (PIC) in Israel and field offices around the globe. For more information, please visit www.powerfleet.com.