

Solutions for Transportation and Logistics

Real-Time Fleet Intelligence to Optimize Your Logistics Operations

Overview

The importance of transportation and logistics in the global supply chain has become crystal clear in recent years, and the challenges you face only continue to increase in complexity.

Logistics visibility is critical for a resilient and efficient supply chain, as well as staying on schedule, and providing excellent customer service – all while keeping costs in check. For maximum visibility you need to be able to track, monitor, and control everything from precise location, through driver workflow and cargo environmental conditions, to load statuses.

Additionally, the sheer volume of data and multiple systems involving your fleet is unmanageable. This results in data latency, inaccuracy, and inconsistency. Deriving real-world, real-time, and actionable insights is nearly impossible.

A comprehensive solution that addresses these pain points is a necessity. By partnering with the right technology provider, you can shine a bright light on

all of the dark spots in your supply chain and deliver on the promise to provide a differentiated offering to your customers.

Whether it's containers, chassis, trailers, reefers, dry van, in-cab, or cargo – Powerfleet is well equipped to solve your challenges.



Solution at a Glance

Our IoT device-agnostic platform, Unity, takes on the heavy lifting by ingesting data from all of your disconnected data sources, including IoT devices, 3rd party devices, OEMs, and external data sources. Unity transforms that data into real-world, decision-grade insights so you can make informed decisions, optimize schedules, safeguard the condition of cargo, proactively detect issues, and elevate fleet performance.

Whether you operate your own private fleet, lease assets, and/or sell assets, Unity is purpose-built to meet your goals - supported by a world-renowned services team with nearly 30 years' experience.

Enabled by our advanced data science, in-house designed hardware, and enterprise SaaS applications, companies can solve their greatest challenges with Powerfleet.

Here's how:



Safety and Security

- Utilize livestream data from dash cameras for driver coaching and performance enhancement to improve safety.
- Leverage third-party data to identify high-risk areas and implement proactive measures, further reducing risks for your fleet, your cargo, and your drivers.
- Use our accident reconstruction insights to understand what happened before, during, and after an accident – used for establishing cause and potentially mitigating liability.
- Enhanced theft recovery capabilities with accurate real-time location information, enabling you to act swiftly and recover stolen assets.



Regulatory Management and Compliance

- Automate compliance workflows with our in-cab Compliance and Workflow Management solution. It complies with Electronic Logging Device (ELD) regulations and enables efficient Hours of Service (HOS) management.
- Easily generate detailed IFTA-compliant reports for tracking fuel consumption and mileage data across state and provincial lines, simplifying tax documentation.



Sustainability

- Achieve ESG goals with advanced fuel management and fleet electrification.
- Understand the impact of your fleet with efficiency, carbon emission, and eco-scoring insights.



Visibility and Resource Management

- Achieve real-time, end-to-end resource visibility via GPS tracking for optimized utilization.
- Utilize images along with door and cargo-area sensors for true freight visibility, aiding insurance claims with location and visual evidence for transit damage disputes.
- Resolve billing disputes with accurate data on start/stop times and sensors alerting container mounts/dismounts.
- Attain real-time cargo and condition tracking, monitoring, and control throughout the delivery journey with environmental sensors for effective cold chain management.



Maintenance and Performance

- Reduce asset downtime, minimize breakdowns, and avoid unnecessary costs with proactive and preventative maintenance, including real-world usage and historical data.
- Receive instant notifications on potential health issues, like engine diagnostics and fault codes, for streamlined repair prioritization.



Advanced Fuel Management

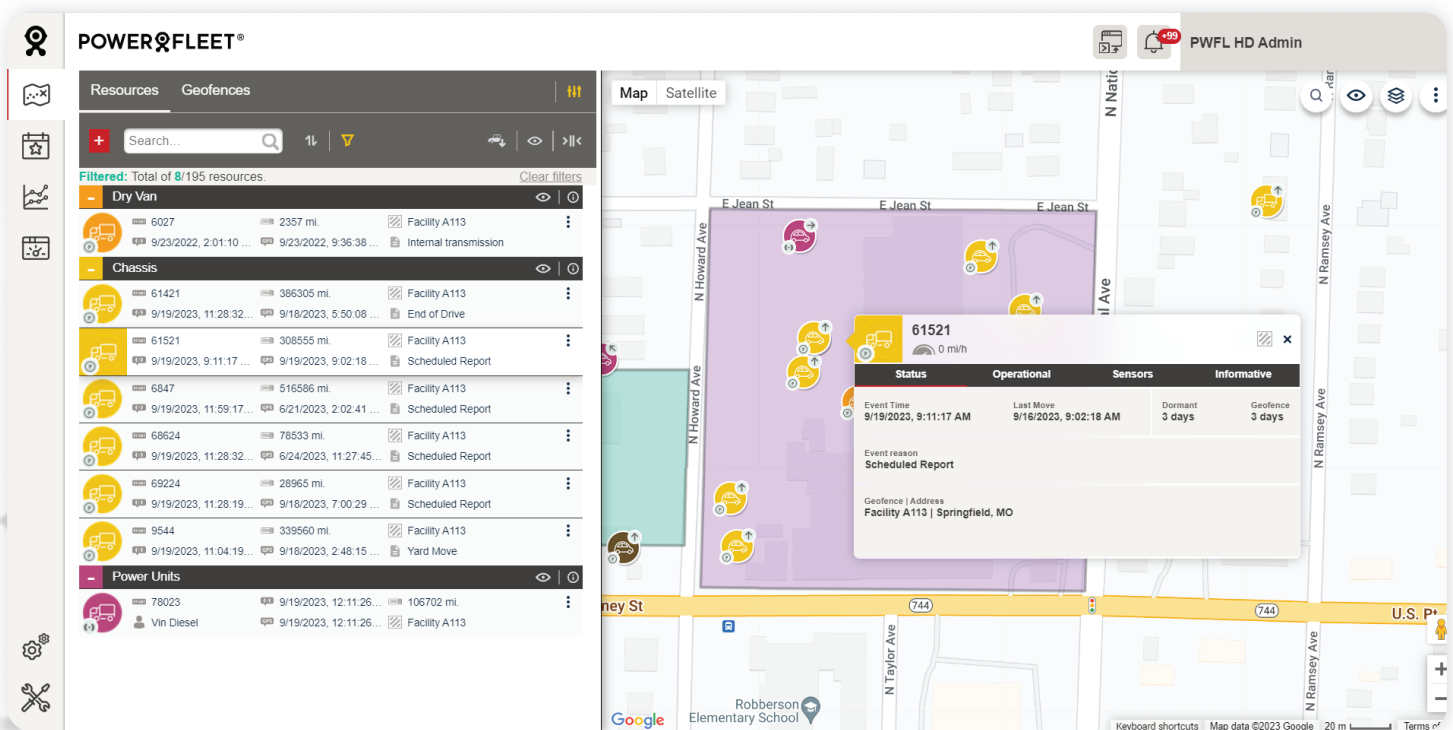
- Easily uncover hidden costs and losses, such as vehicle usage in off-business hours/days and driver behavior that negatively impacts fuel economy.
- Obtain real-time identification of fuel fraud through events and fuel card integration by understanding consumption trends, matching gas station locations with gas-filling, and alerting of sudden drops in fuel tanks.

Results

With Powerfleet you can make fast, informed decisions to streamline operations and capitalize on the latest fleet technologies. Understand and improve your transportation and logistics operations with real-time, KPIs tailored to suit your business and your customers' needs. Be ready today, and for what tomorrow holds.

Put your trust in Powerfleet to:

- Reduce operating costs
- Improve productivity and utilization
- Mitigate liability and lower insurance costs
- Increase vehicle and asset longevity
- Improve security and theft recovery
- Adhere to compliance standards
- Strengthen customer relationships
- Reduce safety incidents
- Achieve sustainability goals



Powerfleet (NASDAQ: PWFL; TASE: PWFL) is a global leader of internet of things (IoT) software-as-a-service (SaaS) solutions that optimize the performance of mobile assets and resources to unify business operations. Our data science insights and advanced modular software solutions help drive digital transformation through our customers' and partners' ecosystems to help save lives, time, and money. We help connect companies, enabling customers and their customers to realize more effective strategies and results. Powerfleet's tenured and talented team is at the heart of our approach to partnership and tangible success. The company is headquartered in Woodcliff Lake, New Jersey, with our Pointer Innovation Center (PIC) in Israel and field offices around the globe. For more information, please visit www.powerfleet.com.