

# Solutions for Construction and Heavy Equipment

Transform Your Construction and Heavy Equipment Operations with Cutting-Edge Insights

## Overview

Effectively managing a mix fleet of high value assets and vehicles, encompassing both yellow iron heavy equipment and over-the-road vehicles, presents a complex challenge within the construction industry.

For your heavy equipment, this task begins with establishing comprehensive visibility and real-time location information, to ensure the timely availability of your resources, while also safeguarding them against potential theft or damage. Additionally, it involves optimizing maintenance protocols based on real-world equipment utilization data, providing a better picture of your equipment's lifecycles, and enabling better-informed business decisions.

For your over-the-road fleet operation, it involves knowing where your vehicles are, being responsible for the safety and security of your people and

vehicles, as well as optimizing fleet maintenance and fuel usage to minimize costs while maximizing equipment utilization. Additionally, these objectives should be pursued while upholding compliance standards and working towards sustainability targets.

Leveraging IoT and telematics data is key to overcoming these challenges. However, managing mixed fleets with diverse devices and systems from different OEMs and varied operations adds complexity, resulting in fragmented data, manual collection, limited analysis, and increased costs.

With the right technology and partner at your side, these challenges are not only overcome - they become an opportunity to differentiate your business.



# Heavy Equipment

## Solution at a Glance

Serving as your true one-stop solution for data aggregation and visualization, Powerfleet's Unity platform seamlessly integrates IoT devices, OEM, and business system data and transforms this data into real-world, decision-grade insights. This versatile data serves a dual purpose, enhancing visibility through our Unity platform and offering the flexibility to export it into preferred formats via API, enabling you to make well-informed decisions with confidence.

Increase your ROI with a series of value-added capabilities. This includes:



### Safety and Security

- Swiftly respond to theft with accurate asset location and instant alerts with real-time security.
- Turning on high frequency reporting to further assist in tracking and recovery
- After-hours movement tracking and emergency alerts allow instant action during unexpected situations.



### Maintenance and Performance

- Reduce downtime, breakdowns, and costs from under or overservicing equipment based on real-world usage and history.
- Maximize equipment longevity by tailoring maintenance to real-world usage patterns, based on engine hours and hydraulic system activation, to maintain optimal performance.
- Instant notifications about potential health issues helps you easily prioritize repairs.
- Promptly recognize maintenance requirements by pinpointing diagnostic trouble codes.



### Regulatory Management and Compliance

- AEMP2.0 compatibility, ensuring seamless data exchange to power your compliance, maintenance planning and visibility needs.

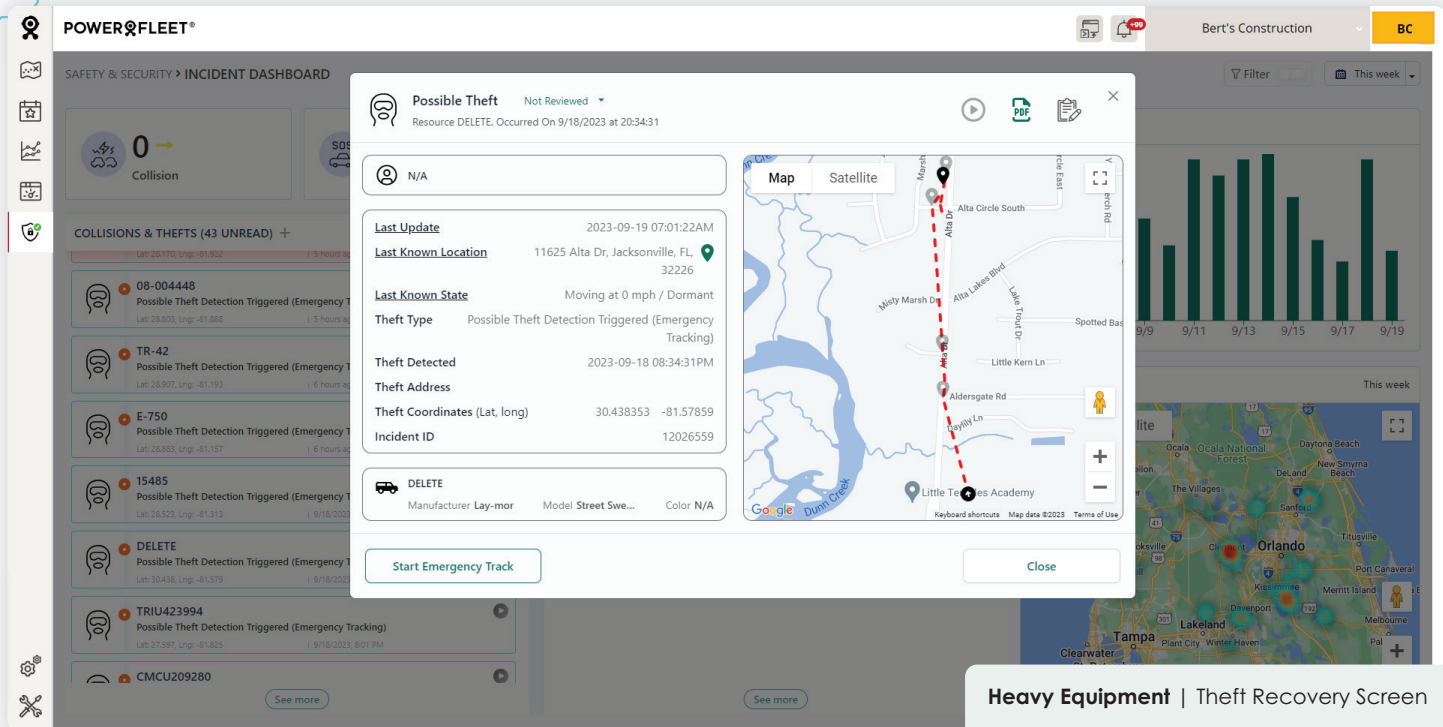


### Visibility and Resource Management

- Gain a comprehensive view of asset location and availability for efficient deployment based on real-time insights and usage patterns.
- Extend equipment lifespan and plan for replacements by understanding real-world usage patterns and maintenance needs via insights from engine hours data.
- Swiftly respond to theft with real-time location data, reducing losses and downtime.
- Allocate resources effectively by uncovering hidden costs, such as off-business usage, idling, dormancy etc.







## Over-the-Road

### Solution at a Glance

Powered by unrivaled data insights, Powerfleet digitizes operations through advanced automation from machine learning, simulation, and artificial intelligence (AI). Our fully agnostic fleet intelligence platform ingests, processes, and enriches data from every asset, vehicle, and person – all in a single pane of glass. Purpose-built to meet the goals of your fleets, our data-powered applications deliver real-world, decision-grade insights, enabling you to make more informed decisions at the speed of business. These data-powered applications include:

#### Safety and Security

- Real-time in-cab driver coaching and incident detection (DMS) leading to a reduction in accidents on the road.
- Warn drivers of hazardous conditions, capture key metrics, and leverage driver scorecards for driver coaching.
- Enable exoneration with our forensic data to understand what happened before, during, and after an accident – establishing cause and potentially mitigating liability.
- Enhanced theft recovery capabilities with accurate real-time location information, enabling you to act swiftly and recover stolen vehicles.

#### Regulatory Management and Compliance

- Electronic logging device to automatically record driving time and Hours of Service (HOS) records (DVIR), vehicle engine data, movement, and miles driven.
- Generate IFTA-compliant fuel usage reports for tax documentation.



## Maintenance and Performance

- Enhance vehicle uptime and minimize breakdowns with proactive maintenance, using real-world usage and historical data.
- Instant notifications on potential health issues for streamlined repair prioritization for preventative maintenance, eliminating reliance on driver communication.
- Avoid unnecessary costs by preventing both over and under maintenance through data-driven insights.
- Promptly recognize maintenance requirements by pinpointing diagnostic trouble codes.



## Sustainability

- Reduce waste by tracking fuel trends and curbing inefficient driving behavior.
- Identify and address driving habits that contribute to increased carbon emissions.
- Plan for electric vehicle adoption by evaluating efficiency and cost factors.



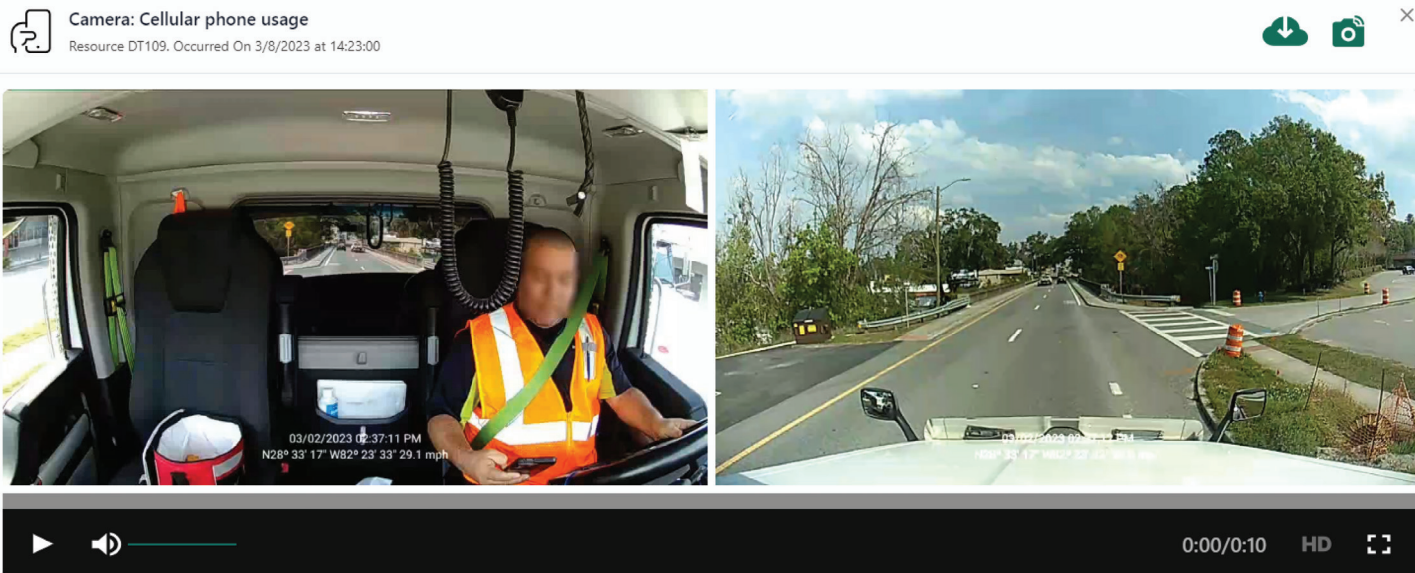
## Visibility and Resource Management

- A clear view of all assets, vehicles, and people, empowering you to always know the location of your resources.
- Stay informed about critical events like geofence entry or exit, dormant vehicles, and unauthorized driving. Proactive monitoring of theft and asset misuse, thereby boosting fleet performance and efficiency and protecting your bottom line.
- Swiftly respond to theft with real-time location data, reducing losses and downtime.
- Integrated assets ensure efficient resource assignment, reducing inefficiencies and costs.

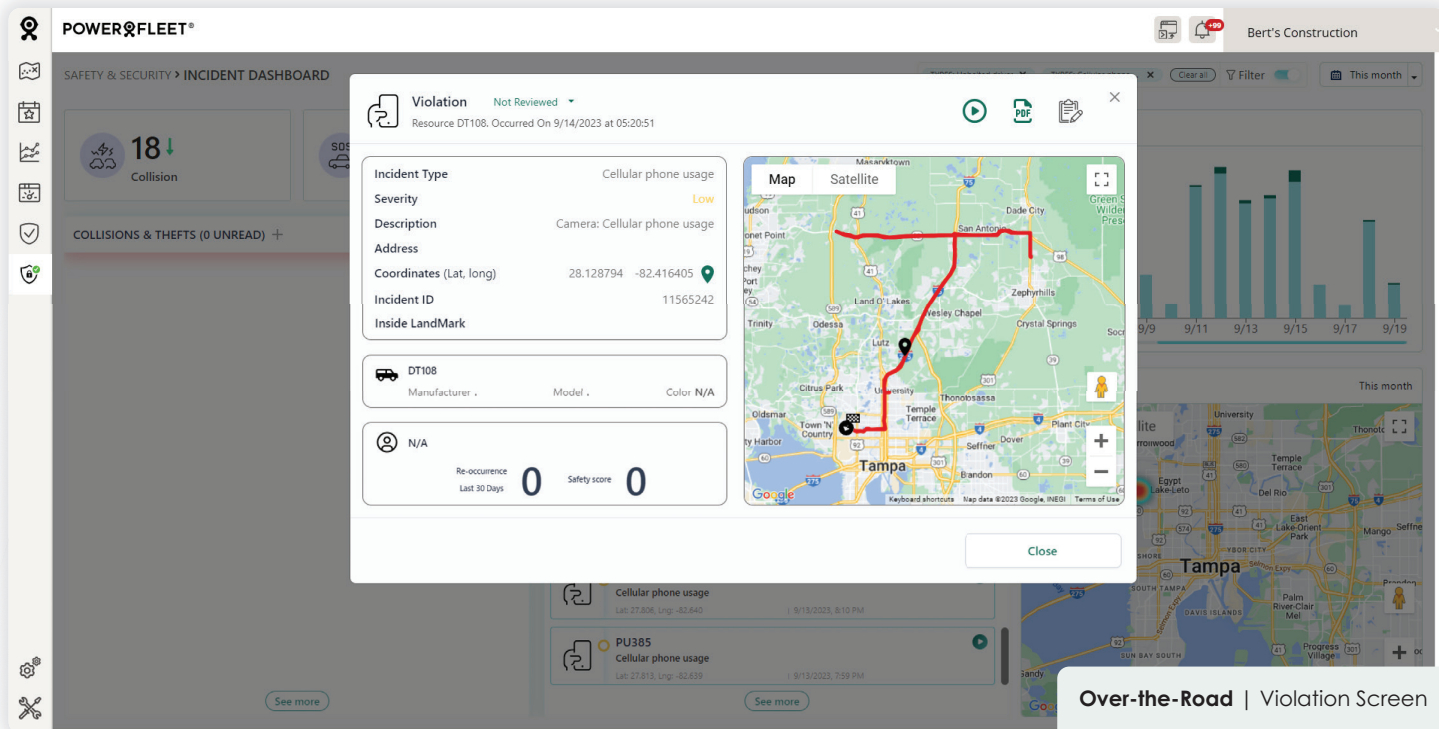


## Advanced Fuel Management

- Identify fuel fraud by monitoring events and fuel card integration.
- Reduce waste and enhance sustainability by matching consumption trends with gas-filling and gas station locations, preventing idling, improving driver behavior and more.



Over-the-Road | DashCam Screen



## Results

With Powerfleet you have access to real-time, multi-dimensional KPIs tailored to your business. You're empowered with the insight to optimize operations today, while advocating for the future of your fleet.

- Reduce theft
- Shrink operating costs
- Increase longevity of assets
- Enhance utilization
- Reduce safety incidents
- Mitigate liability
- Reduce fuel costs
- Optimize asset, equipment and people utilization
- Achieve sustainability goals
- Adhere to compliance standards
- Protect brand reputation
- Boost employee morale
- Improve customer satisfaction

Powerfleet (NASDAQ: PWFL; TASE: PWFL) is a global leader of internet of things (IoT) software-as-a-service (SaaS) solutions that optimize the performance of mobile assets and resources to unify business operations. Our data science insights and advanced modular software solutions help drive digital transformation through our customers' and partners' ecosystems to help save lives, time, and money. We help connect companies, enabling customers and their customers to realize more effective strategies and results. Powerfleet's tenured and talented team is at the heart of our approach to partnership and tangible success. The company is headquartered in Woodcliff Lake, New Jersey, with our Pointer Innovation Center (PIC) in Israel and field offices around the globe. For more information, please visit [www.powerfleet.com](http://www.powerfleet.com).