

Solutions for Car Leasing

Revolutionize Leased Vehicle Operations with Advanced Insights and Innovative Capabilities

Overview

To achieve high growth and profitability in the highly competitive car leasing industry, delivering superior customer experience at a competitive price is essential. To do that you'll need to reduce operating costs, strengthen customer relationships, increase your revenue, and have the foresight to make the right decisions for your business. Car leasing companies face challenges beyond market competition, including residual value risk, maintenance management, vehicle depreciation, adapting to customer demands and sustainability goals.

Leveraging IoT and telematics data is key to overcoming these challenges. However, managing mixed fleets with diverse devices and systems from different OEMs adds complexity, resulting in fragmented data, manual collection, limited analysis, and increased costs.

By partnering with the right technology provider, these challenges can be turned into opportunities for differentiation and success.



Solution at a Glance

Powered by unrivaled data insights, Powerfleet digitalizes operations through advanced automation from machine learning, simulation, and artificial intelligence (AI). Our fully agnostic fleet intelligence platform ingests, processes, and enriches data from every asset, vehicle, and person – all in a single pane of view. Supported by a world-renowned services team with nearly 30 years' experience.

Powerfleet is purpose-built to meet the goals of your and your customers' fleets. This includes:

Safety and Security

- Ensure the return of vehicles at the end of the leasing contract, as well as in cases of nonpayment or delinquent payments.
- Improve theft recovery capabilities by leveraging accurate real-time location information through push alerts, as well as geofence and entry/exit event highlight areas of risk.
- Bolster security measures by offering the ability to remotely immobilize the vehicle as an additional feature.
- Generate added value and increase revenue for long-term leasing by incorporating safety features such as accident reporting, reconstruction, and monitoring driver behavior through the creation of scorecards.
- Use our forensic data to understand what happened before, during, and after an accident – establishing cause and potentially mitigating liability.

Maintenance and Performance

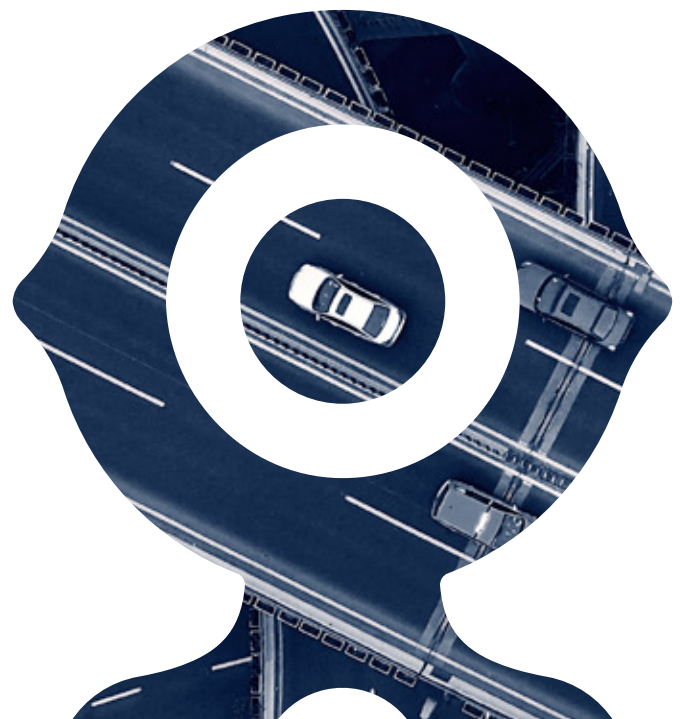
- Reduce downtime, breakdowns, and costs from under or overservicing based on real-world usage and history.
- Live engine diagnostics and maintenance alerts based on predefined dates and/or the odometer increases vehicle longevity.
- Creating your own maintenance tasks assures work gets carried out when you need it.
- Instant notifications about potential health issues helps you easily prioritize repairs.

Visibility and Resource Management

- Gain complete visibility of your leased vehicles, ensuring continuous knowledge of their location and usage.
- Monitor when important events occur – geofence, entry to avoid theft, and vehicle misuse.
- Provide automated odometer updates for customers to ensure compliance with leasing mileage contracts and maintain strong customer relationships.
- Stay on top of inventory management aligned with market fluctuations and trends, empowered by data from Powerfleet.

Sustainability

- Transition to electric vehicles (EV) with battery and charging management as well as insights into accuracy of remaining driving range and location of charging stations.
- Effortlessly report on your carbon footprint, ensuring compliance with legislative guidelines and governmental requirements as they emerge, while guaranteeing that leased vehicles meet all necessary standards.

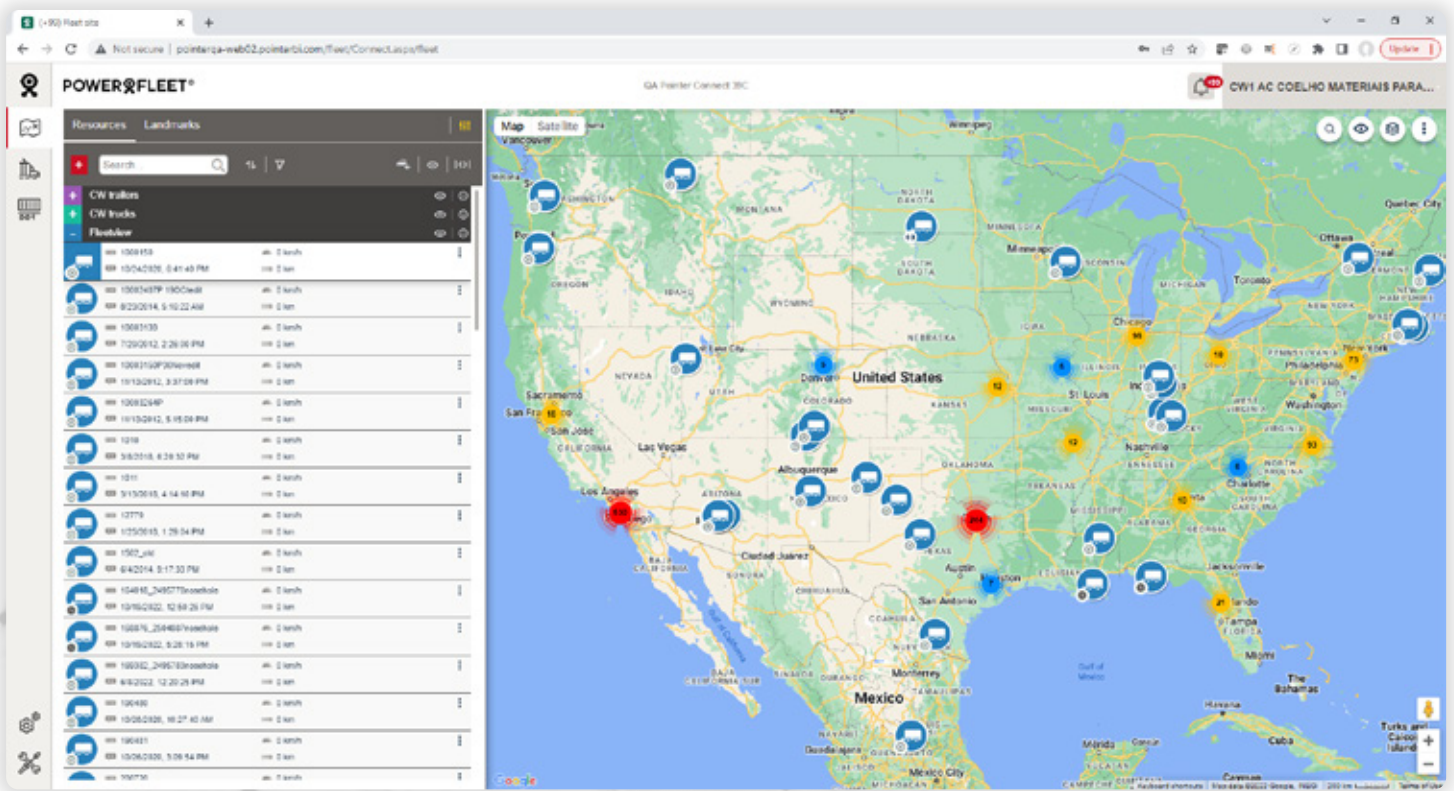


Results

With Powerfleet you can make fast, informed decision to automate operations and capitalize on the latest fleet technologies. Win more deals with real-time, multi-dimensional KPIs tailored to your and your customers' businesses. Be ready today, and for what tomorrow holds.

Put your trust in Powerfleet to:

- Optimize fleet utilization
- Strengthen customer relationships
- Improve the safety environment
- Shrink operating costs
- Increase vehicle longevity
- Protect your brand reputation



Powerfleet (NASDAQ: PWFL; TASE: PWFL) is a global leader of internet of things (IoT) software-as-a-service (SaaS) solutions that optimize the performance of mobile assets and resources to unify business operations. Our data science insights and advanced modular software solutions help drive digital transformation through our customers' and partners' ecosystems to help save lives, time, and money. We help connect companies, enabling customers and their customers to realize more effective strategies and results. Powerfleet's tenured and talented team is at the heart of our approach to partnership and tangible success. The company is headquartered in Woodcliff Lake, New Jersey, with our Pointer Innovation Center (PIC) in Israel and field offices around the globe. For more information, please visit www.powerfleet.com.