

Fleet Management Solutions

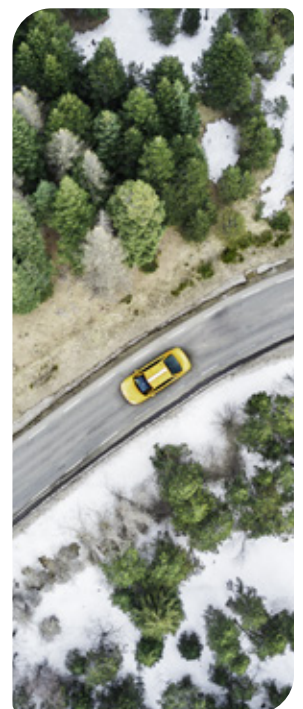
Industry-Leading Insights to Revolutionize Your Fleet Operations

Overview

Being responsible for the safety and security of your people and vehicles, as well as utilization and longevity of your resources, is already a tough job. It will only become more difficult as industry demands, customer expectations, and advances in technology increase.

Fleet managers are challenged by not knowing where their vehicles are, the health of their vehicles, and if they have enough resources to complete the work for the day. On top of that, they need to actively monitor driver behavior to reduce vehicle misuse, improve fuel usage, increase driver retention, be compliant, and meet sustainability goals. The consequences are lower margins, lower customer satisfaction, higher liability – and even a negative association for your brand.

With the right technology and partner at your side, these challenges are not only overcome - they become an opportunity to differentiate your business.



Solution at a Glance

Powered by unrivaled data insights, Powerfleet enables businesses to digitalize operations through advanced automation from machine learning, simulation, and artificial intelligence (AI). This is made possible through Unity, our SaaS-based fleet intelligence platform. Unity ingests, processes, and enriches data from every asset, vehicle, and person. This is supported by a world-renowned services team with nearly 30 years of experience.



Safety and Security

- Enhance driver performance while identifying danger spots to reduce incidents on the road with live-stream data.
- Warn drivers of hazardous conditions, capture key metrics, and leverage driver scorecards for driver coaching.
- With real-time alerts and a wide range of monitored maneuvers, always have the complete picture of your fleet's safety performance.
- Use our forensic data to understand what happened before, during, and after an accident – establishing cause and potentially mitigating liability.



Maintenance and Performance

- Reduce downtime, breakdowns, and costs from under or overservicing based on real-world usage and history.
- Live engine diagnostics and maintenance alerts based on predefined dates and/or the odometer increases vehicle longevity.
- Creating your own maintenance tasks assures work gets carried out when you need it. Furthermore, instant notifications about potential health issues helps you easily prioritize repairs.



Visibility and Resource Management

- A clear view of all assets, vehicles and people, empowering you to always know the location of your resources.
- Monitor when important events occur - geofence entry, dormant vehicles, and unauthorized driving – to avoid costly rentals, theft, and asset misuse to increase the performance and efficiency of your fleet.
- A flexible API platform to easily bring all vehicles and any IoT device type into a single pane of glass



Advanced Fuel Management

- Manage costs, avoid theft, improve driver behavior to reduce waste, and meet sustainability goals.
- Real-time identification of fuel fraud is achieved through monitoring events and fuel cards integration by matching consumption trends, gas station locations with gas-filling, and sudden drops in fuel tanks.
- Easily uncover other hidden costs and losses, such as vehicle usage in off-business hours/days and driver behavior that negatively impacts fuel economy.



Regulatory Management and Compliance

- Automate record keeping to reduce violations while increasing productivity and driver safety.
- Feel confident with your regulatory management while intelligently streamlining compliance workflows.
- Electronic logging device to automatically record driving time and Hours of Service (HOS) records (DVIR), vehicle engine data, movement, and miles driven.



Sustainability

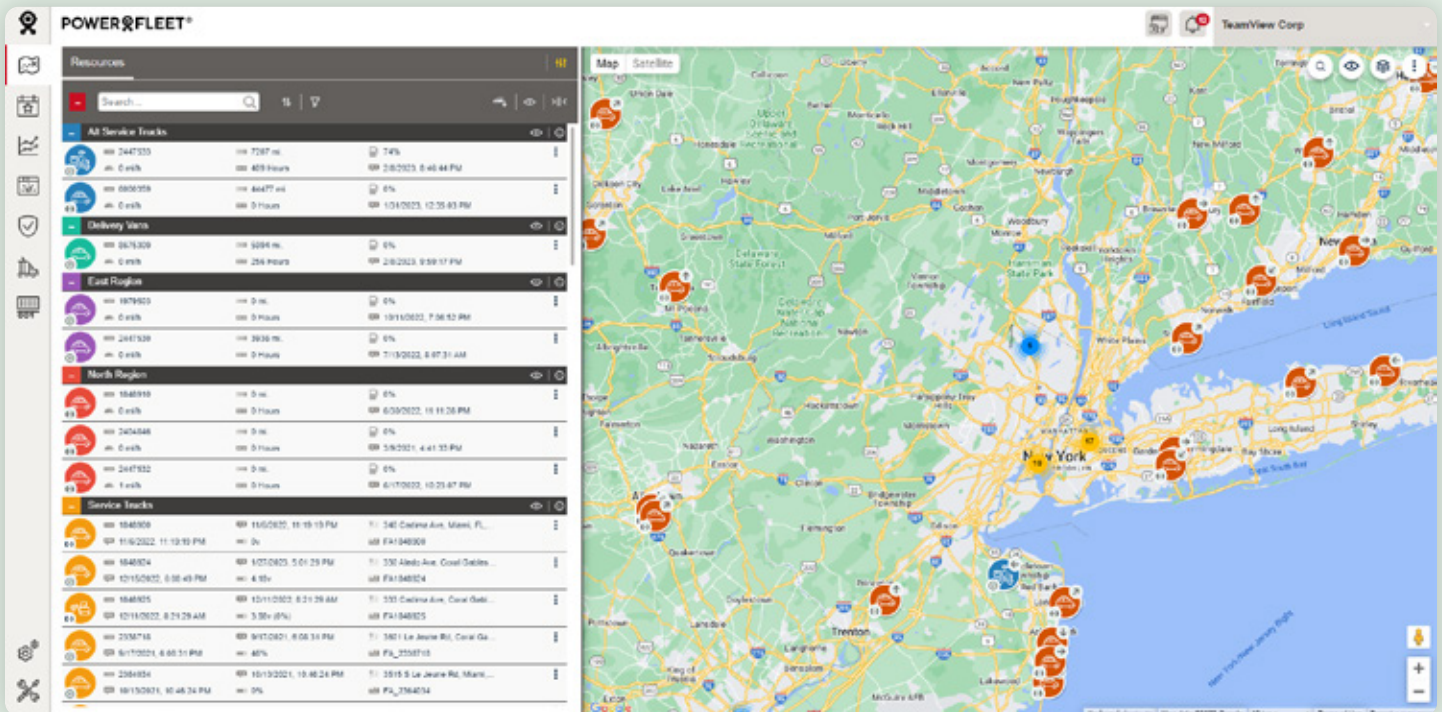
- Transition to electric vehicles (EV) with battery and charging management as well as insights into accuracy of remaining driving range and location of charging stations.
- Achieve eco-friendly driving by detecting, reporting, consolidating, and scoring driving events that increase fuel consumption, emission of carbon gas, and accelerate wear and tear of vehicle parts.
- Gain insight into your CO2 consumption to properly manage against your carbon credits and inform ESG reporting.

Results

With Powerfleet you have access to real-time, multi-dimensional KPIs tailored to your business. You're empowered with the insight to optimize your fleet operations today, while being ready for what tomorrow holds.

Put your trust in Powerfleet to to:

- Reduce safety incidents
- Boost employee morale
- Improve customer satisfaction
- Shrink operating costs
- Mitigate liability
- Raise driver retention
- Increase longevity of assets
- Optimize asset, vehicle, and people utilization
- Protect brand reputation
- Achieve sustainability goals
- Adhere to compliance standards



Powerfleet (NASDAQ: PWFL; TASE: PWFL) is a global leader of internet of things (IoT) software-as-a-service (SaaS) solutions that optimize the performance of mobile assets and resources to unify business operations. Our data science insights and advanced modular software solutions help drive digital transformation through our customers' and partners' ecosystems to help save lives, time, and money. We help connect companies, enabling customers and their customers to realize more effective strategies and results. Powerfleet's tenured and talented team is at the heart of our approach to partnership and tangible success. The company is headquartered in Woodcliff Lake, New Jersey, with our Pointer Innovation Center (PIC) in Israel and field offices around the globe. For more information, please visit www.powerfleet.com.