

CONTAINER, CHASSIS, AND TRAILER TRACKING

ASSET TRACKING

Logistics Gateway - Solar

Standalone, Multi-Power Asset Management and Wireless Sensor Gateway for Easy Installation and Maintenance-Free Operation

Description

The **Logistics Gateway – Solar** is a self-contained, multi-powered asset tracking and wireless sensor gateway, featuring solar operation/recharge, supercapacitor rechargeable power, and primary battery backup. This combination provides enhanced flexibility and ensures years of maintenance-free performance.

The Logistics Gateway – Solar establishes a seamless wireless connection with our FreightCam and other wireless sensors, enabling a comprehensive view of the cargo and capturing essential operational and environmental data such as tire pressure monitoring, temperature, humidity, shock, cargo tag, and more.

The Dual-mode version of the Logistics Gateway - Solar, also incorporates bidirectional Iridium® satellite communication as a fallback when CAT-1/LTE cellular communication is unavailable. This dual-mode communication ensures uninterrupted coverage in scenarios where there are coverage gaps due to rural networks, cross-border/network operation, or adverse conditions like natural disasters and extreme weather.

Powerfleet's Logistics Gateway - Solar, integrates with Unity, our SaaS-based fleet intelligence platform that ingests, processes, and consolidates data from every asset, vehicle, and person. Through advanced data intelligence, Unity unifies business operations.

Key Features

- 4G/LTE CAT-1 NA with 3G fallback, 4G/LTE CAT-1 EU with 3G and 2G Fallback
- Solar-charged supercapacitors and Lithium primary battery backup
- Multifunction Wireless Sensor Hub
- Optional FreightCam image cargo sensor with wireless integration
- Long service life and low maintenance
- 10-minute fully external/loaded install
- In-transit GPS reporting
- Magnetic switch for activation/panic
- LED indicator lights for install verification
- Iridium satellite fallback (Dual Mode Version)
- Tamper detection and alerts
- Configurable and fully programmable

- 10-year service life*
- Up to 100 on-device geofences

*Based on daily solar recharge and 13 transmissions per day in average conditions



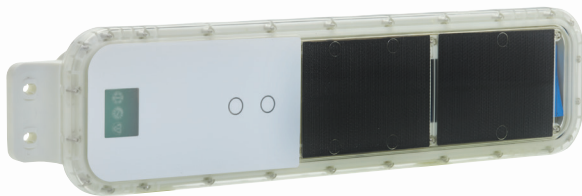
No external power



Rugged housing with IP69k rating



10-minute loaded installation



Designed to Revolutionize Your Logistics Operations

The **Logistics Gateway - Solar** offers a broad range of business-relevant asset and freight management features designed to revolutionize your logistics operations:

- Avoid cargo loss
- Ensure asset visibility
- Increase utilization
- Enhance productivity
- Improve driver satisfaction
- Reduce operating costs
- Reduce fuel consumption
- Reduce theft
- Achieve sustainability goals
- Drive continuous improvement

Technical Specifications

Communication

Cellular Technology	4G/LTE Cat 1 CAT-1 NA with 3G Fallback LTE NA: Bands 2, 4, 5, 12 (700, 850, 1700/2100 (AWS), 1900 MHz) Data rates: 10.2[DL] / 5.2[UL] Mbps 3G NA: UMTS Bands 5, 4, 2 (850, 1700/2100 (AWS), 1900); HSPA 5.76[UL]/7.2[DL] Mbps LTE Cat 1 CAT-1 EU with 3G and 2G Fallback
Cellular Data Rates	Download 20 Mbps, Upload 15 Mbps
SIM	Internal, Micro (3FF) SIM replaceable, 1.8/3V Optional SIM on chip Remote PIN code management
Satellite	Iridium satellite modelm and network

BLE

BLE Technology	2.4 GHz proprietary wireless interface for sensor integration/ Transmission power – 8 dBm Line of site – 100 m minimum
----------------	--

Global Positioning

Type	Internal module CSR SiRFstarV™ based GPS and GLONSS supported
Sensitivity	-165 dBm
TTF @ -130dB	Cold <27 Sec, Warm <10 Sec, Hot <1 Sec
Internal Antenna	Internal

Power

Input Voltage	Monocrystalline, two panels sized 110 x 80 mm Max 2.4 W @STC, charging the 200F supercapacitor
Internal Battery	Primary: Lithium-Thionyl Chloride (SOCl ₂), 3.6V, 34 Ah, Super Cap: 200F, 5.4V

Technical Specifications (cont'd)

Environmental

Temp, operation	-30°C to +75°C
Temp, storage	0°C to 30°C (battery limitation)
Ingress Protection	IP 69k & IP 67
Vibration, Impact	AAR S5703 Railroad Electronics Environmental Requirements MIL-STD-810E

Certifications

Communication	Part 15 Subpart B, Part 22/24/27; Part 15 Subpart C PTCRB, ATT
Regional	ICES-003, Issue 5:2012 Class B CAN/CSA-CEI/IEC CISPR 22:10 RoHS 3 Directive 2015/863 Compliant Conflict Mineral directives UL94-5VA

Size

Dimensions	110.7 mm x 44.8 mm x 488.7 mm
Weight	Solar: 1,300 gr; Solar + Satellite: 1,312 gr

Features

Movement	3D, ±8g range, 12-Bit Representation, 4 mg Resolution Movement Detection
----------	---

Powerfleet (NASDAQ: PWFL; TASE: PWFL) is a global leader of internet of things (IoT) software-as-a-service (SaaS) solutions that optimize the performance of mobile assets and resources to unify business operations. Our data science insights and advanced modular software solutions help drive digital transformation through our customers' and partners' ecosystems to help save lives, time, and money. We help connect companies, enabling customers and their customers to realize more effective strategies and results. Powerfleet's tenured and talented team is at the heart of our approach to partnership and tangible success. The company is headquartered in Woodcliff Lake, New Jersey, with our Pointer Innovation Center (PIC) in Israel and field offices around the globe. For more information, please visit www.powerfleet.com.