

Solutions for Construction and Heavy Equipment

Transform Your Construction and Heavy Equipment Operations with Cutting-Edge Insights

Overview

Managing a fleet of high value assets and vehicles is a high wire act. It starts with access control and real-time location information to ensure your resources are ready when needed. It also includes optimizing maintenance and fuel usage to keep costs low and equipment utilization high. And most importantly, it's managing driver safety and keeping all employees on the job site safe and secure. Powerfleet Unity is a complete platform that connects to all of your assets and uses real-time data to drive insights to help you lower costs, improve utilization, reduce fraud, and keep your team members safe.



Solution at a Glance

Powered by unrivaled data insights, Powerfleet enables fleet managers to make informed decisions today while digitalizing operations through advanced automation from machine learning, simulation, and artificial intelligence (AI). This is made possible through Unity, our SaaS-based fleet intelligence platform. Fully agnostic, Unity ingests, processes, and enriches data from every asset, vehicle, and person – regardless of manufacturer. This is supported by a world-renowned services team with nearly 30 years of experience.



Safety and Security

- Create a safer environment for employees, prevent accidents, and avoid litigation.
- Receive real-time insights on driver behavior and history, along with forensic data for reconstructing safety events.
- Proactively map high-risk areas and activities.
- Be equipped to deal with theft recovery with accurate location information from real-time push alerts.



Regulatory Management and Compliance

Digital checklists for compliance and accurate monitoring across state lines ensure businesses comply with regulations, avoid penalties, and capitalize on tax breaks.



Visibility and Resource Management

- Achieve full visibility of your assets, their lifecycle stage, and demand.
- Real-time alerts assure accurate location information and theft recovery.
- Actual engine hours pinpoint wear and tear and hidden costs from off-hours usage.



Maintenance and Performance

Reduce breakdowns and avoid unnecessary service costs with preventative maintenance based on actual usage.



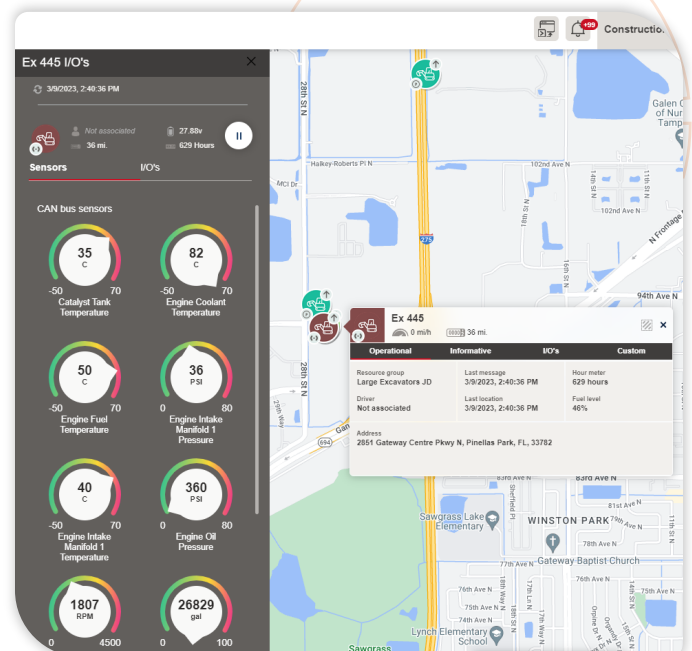
Advanced Fuel Management

- Identify fuel fraud by monitoring events and fuel card integration.
- Reduce waste and enhance sustainability by matching consumption trends with gas-filling and gas station locations, preventing idling and more.



Sustainability

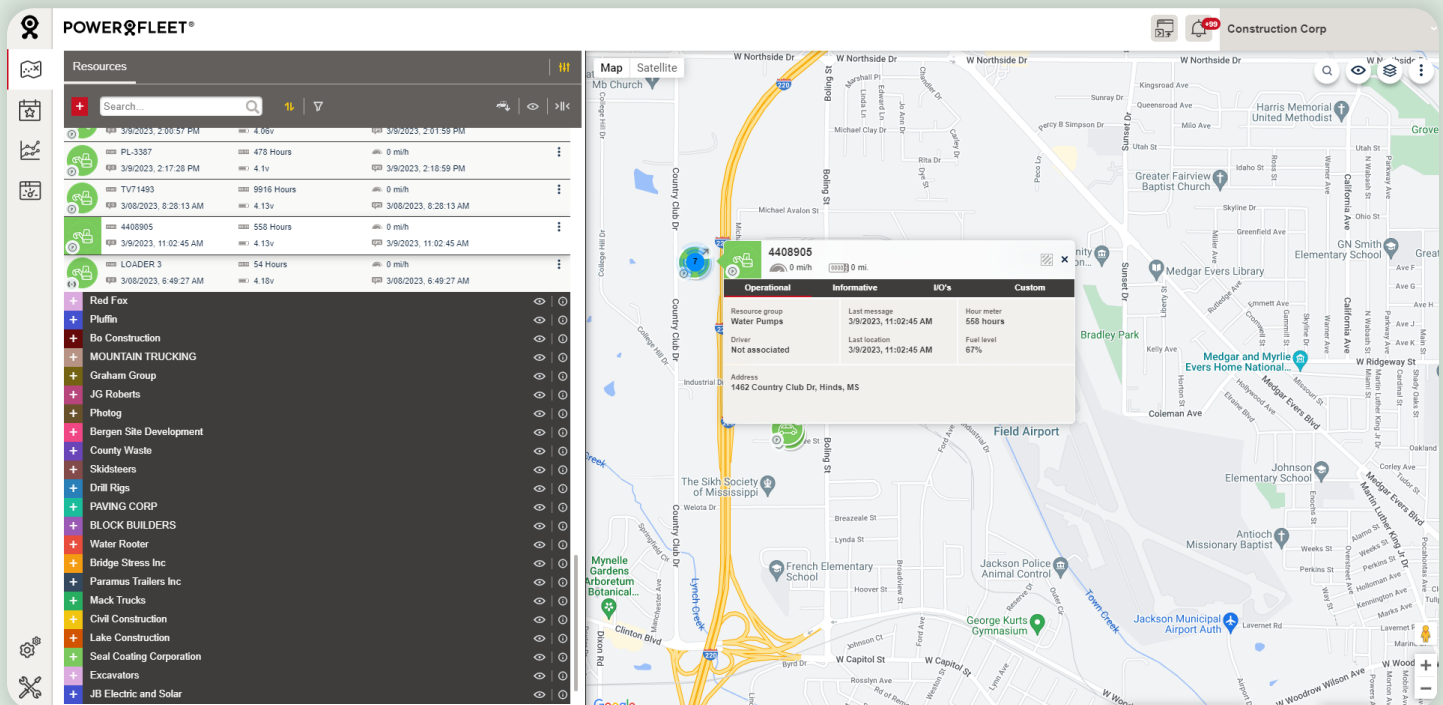
Achieve eco-friendly driving by detecting, reporting, consolidating, and scoring driving events that increase fuel consumption, emission of carbon gas, and accelerate wear and tear of vehicle parts.



Results

With Powerfleet you have access to real-time, multi-dimensional KPIs tailored to your business. You're empowered with the insight to optimize operations today, while advocating for the future of your fleet.

- Reduce safety incidents
- Boost employee morale
- Improve customer satisfaction
- Shrink operating costs
- Mitigate liability
- Reduce fuel costs
- Increase longevity of assets
- Optimize asset, equipment and people utilization
- Protect brand reputation
- Achieve sustainability goals
- Adhere to compliance standards



Powerfleet (NASDAQ: PWFL; TASE: PWFL) is a global leader of internet of things (IoT) software-as-a-service (SaaS) solutions that optimize the performance of mobile assets and resources to unify business operations. Our data science insights and advanced modular software solutions help drive digital transformation through our customers' and partners' ecosystems to help save lives, time, and money. We help connect companies, enabling customers and their customers to realize more effective strategies and results. Powerfleet's tenured and talented team is at the heart of our approach to partnership and tangible success. The company is headquartered in Woodcliff Lake, New Jersey, with our Pointer Innovation Center (PIC) in Israel and field offices around the globe. For more information, please visit www.powerfleet.com.