

# PowerFleet V-AI12

## Quick Installation Guide

***Thank you!***

We are excited to introduce you to your new V-AI12 Connected Dashcam.

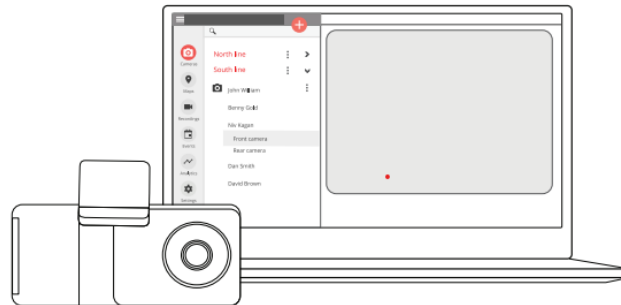
With Vista you can harness the power of video to connect your fleet vehicles, help protect your drivers on the road and save lives.

Have a safe trip,

Vista team

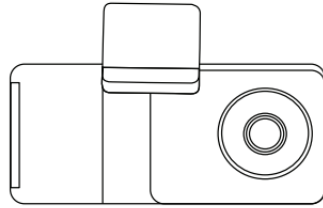
## Explore Vista

- **CAPTURE THE DRIVE** - Simultaneously capture the road and cabin to detect distracted driving and risky driving events.
- **LIVE VIDEO** - View live video from your camera using any device.
- **AI DRIVER ALERTS** - Provide visual and audio alerts of distracted and risky driving events.
- **CLOUD MANAGEMENT** - Instant access to view and download live video, events, and recordings. \*

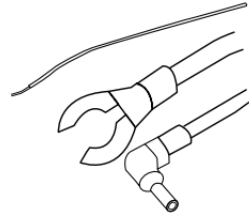


\*\_Subject to available cellular network coverage.

**What's in the box**



AI-12 Camera



Hardwire Kit



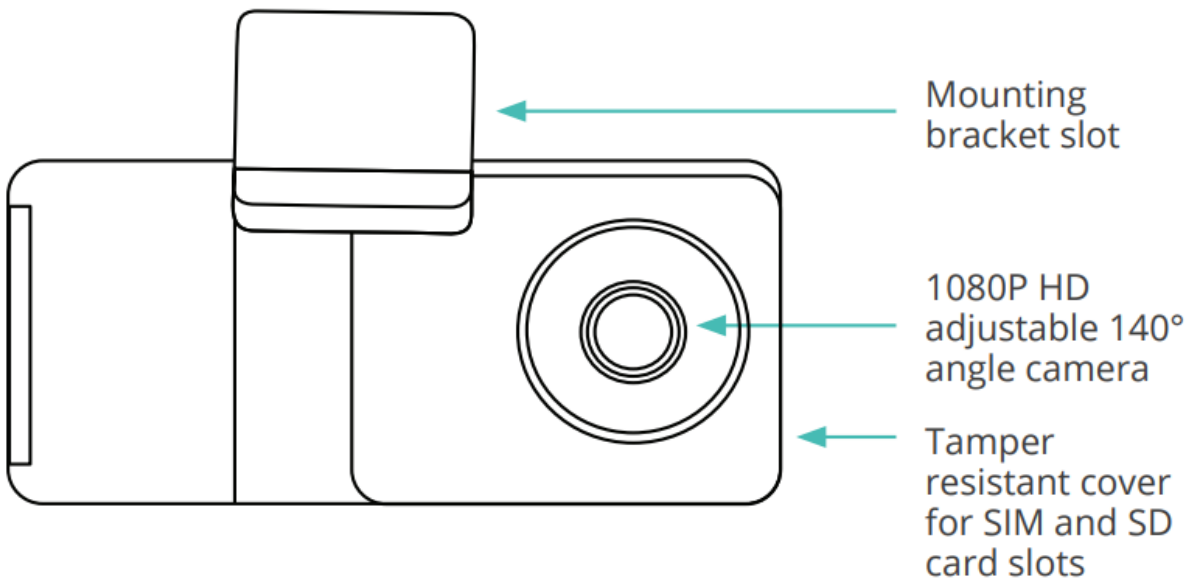
Mounting Bracket



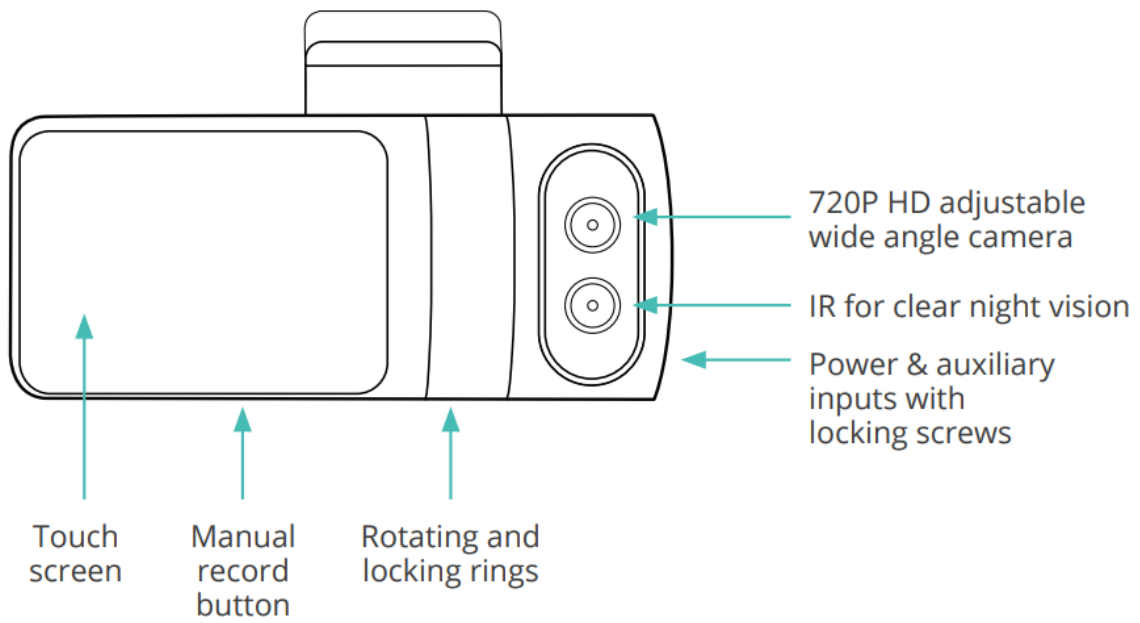
Proprietary Screwdriver

**V-AI12 features**

**ROAD-FACING CAMERA**



## CABIN-FACING CAMERA

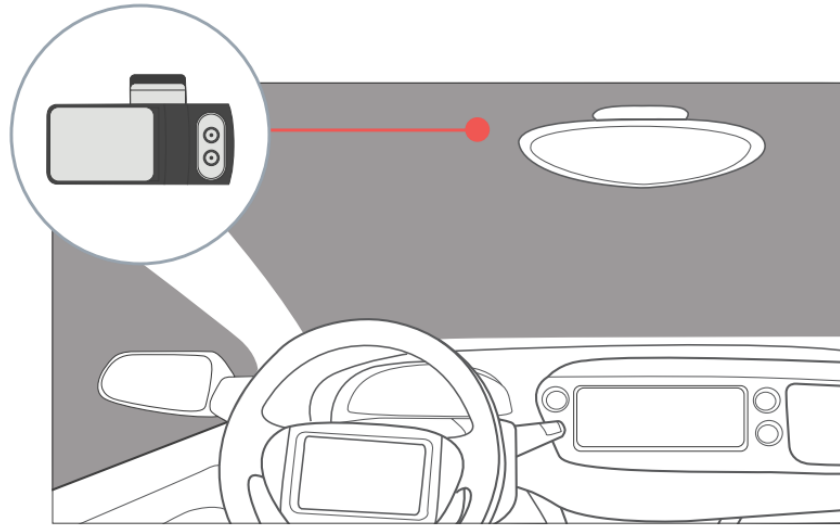


## ***Install V-A112***

Before you start, make sure that the vehicle is parked on a level surface and that the windshield is clean and dry.

- Unscrew the safety screws that lock the tamper proof case using the specialty screwdriver.
- Insert the SIM and SD cards.
- Attach the mounting bracket onto the camera.
- Place the camera as high as possible on the driver side of the vehicle.
- Remove the 3M adhesive tape cover, and mount the camera to the windshield.

WARNING: Prior to installation, please review safety warnings and guidelines at [powerfleet.com/disclaimers](http://powerfleet.com/disclaimers)



**DO NOT INSTALL THE PRODUCT IN A LOCATION WHERE IT CAN OBSTRUCT THE DRIVER'S FIELD OF VISION.\***

*\*Some jurisdictions have regulations that prohibit or restrict where objects can be placed on the windshield. Be sure to comply with applicable law.*

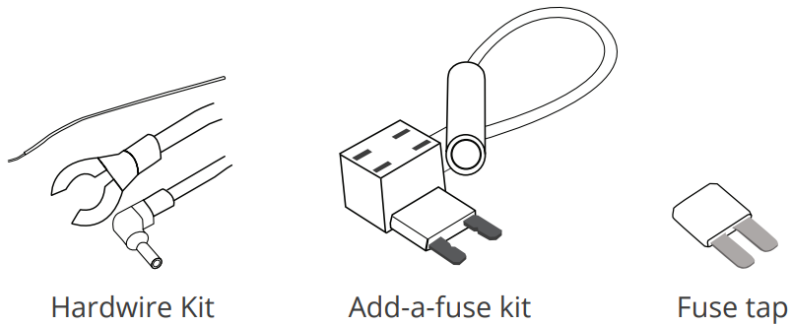
## Hardwire to the vehicle fuse box

Hardwiring a dashcam to the vehicle's fuse box is one of the most common installation methods to power on your dashcam. In order to utilize the V-AI12 full features such as active standby, the camera must be connected to a constant 12V power source.

**NOTE:** The hardwiring kit includes 2 wires; one RED wire that connects to a constant 12V source and a BLK ground wire that will go to a metal ground bolt.

### Essential Install Package

**WARNING:** This type of installation should only be performed by a qualified technician. Working with your vehicle's power system can be dangerous for you and your vehicle. If you have any concerns, consult a professional.



## Hardwire to the vehicle fuse box

### STEP 1: LOCATE YOUR FUSE BOX

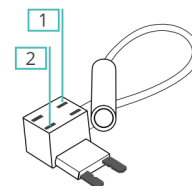
Check the car owner's manual for the fuse box location. It may vary depending on the vehicle model. Remove the plastic panel to access the fuse box. It may open simply by lifting a tab, pulling it with your fingers, or using a flat tool to insert and separate the cover.

### STEP 2: WHICH SLOT SHOULD I USE?

Use a circuit tester to test which fuse is constant (typically red) and provides 12V of power. A fuse that is constant will stay active when the car is off. The camera will automatically enter standby mode when the car has not moved for 10 minutes.

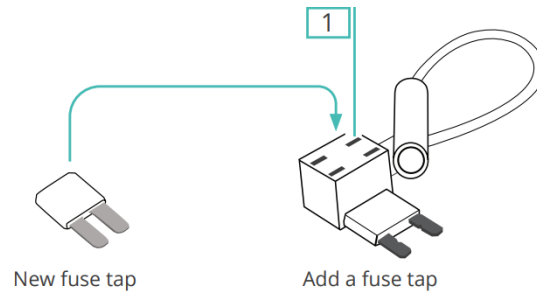
### STEP 3: INSTRUCTIONS TO ADD-A-FUSE KIT

We recommend using the add-a-fuse kit included in our Essential Install Package, for a more secure, long lasting installation. The add-a-fuse kit provides a fuse slot for the existing OEM circuit (constant or ignition switched, #2 in picture right) and another fuse slot for the new circuit for the dashcam device (#1 in picture right).

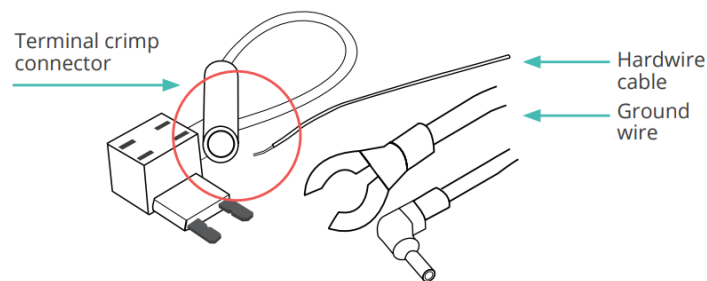


## Hardwire to the vehicle fuse box

1. Insert the new fuse tap provided in the kit into “slot 1”, and the fuse from the fuse box into “slot 2” (Constant or Ignition Switch). If you place them in the wrong order, it will not feed power to the hardwire kit.



2. Connect the hardwiring cable with the terminal crimp connector from the add-a-fuse kit. Trim off some of the rubber tubing to expose the wiring on your hardwiring cable. Then crimp them down together. You should be able to crimp the fuse kit with a standard needle nose pliers. We recommend using electrical tape to further secure the wire.



## Hardwire to the vehicle fuse box

3. Connect your add-a-fuse kit to the vehicle fuse slot that you have chosen.

### STEP 4: GROUND THE HARDWIRE KIT

4. The ground wire is usually in a C shape or a ring. To connect the ground wire, slip it under a metal bolt or screw in your vehicle.

5. Loosen the bolt enough to slip the wire in and tighten (you might need a socket wrench set). A loose ground can result in power issues for your dashcam. We recommend grounding your wire to an unpainted bare metal bolt.

### STEP 5: TEST YOUR DASHCAM

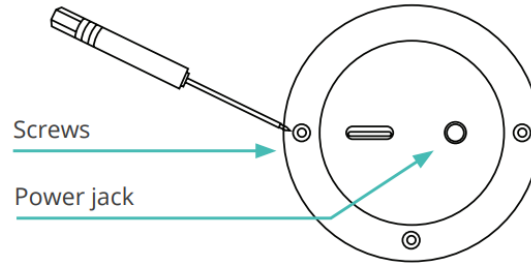
6. Plug the power cable to the dashcam. Start your vehicle to test if the dashcam powers up. Once you tested your dashcam, run the power cable along the headliner of the car along the A-Pillar to the power source for a clean installation.

**That's it. You've successfully installed your dashcam!**

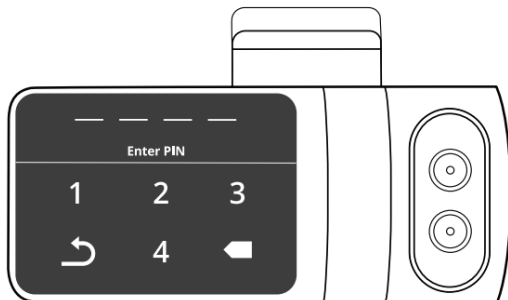


### ***Adjusting the viewing angle of the V-AI12***

- Dismount the V-AI12 camera from the mounting bracket on the windshield. Make sure that the mounting bracket is not attached, as it locks the camera into position.
- Use the screwdriver to loosen the three security screws on the round side of the camera. Do not remove the screws fully.
- Adjust the viewing angle by rotating the body of the V-AI12 and lock the three side screws when finished.

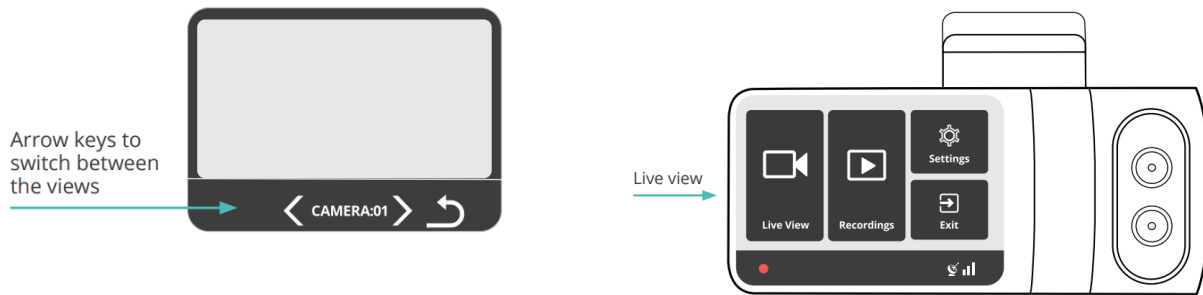


- Mount the camera back onto the windshield.
- Connect the camera to a power source (page 12).
- The camera will turn on automatically.
- To unlock the camera touch screen, enter a default PIN number 3333 (page 13).



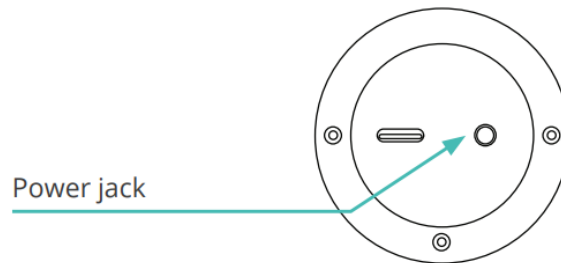
## Adjusting the viewing angle of the V-AI12

- On the main screen enter the 'Live View' mode.
- Use the 'Live View' to direct the road-facing camera and the cabin-facing camera to the proper direction. You can use the arrow keys to switch between the views.
- Dismount the camera from the windshield and tighten the security screws. Mount the camera back on the windshield.



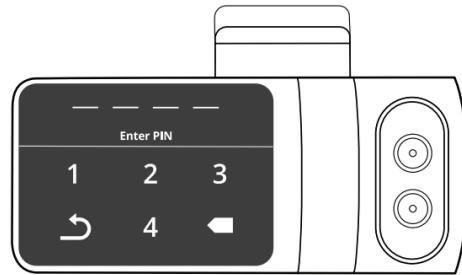
## Hardwire to the vehicle fuse box

- The V-AI12 may only be connected to a power source using the supplied cables.
- The camera's cylinder side is where the input power connector is located.
- If using the USB cable as the power source, it must provide 5V DC and at least 2A.
- In order to utilize the V-AI12 full features such as active standby, the camera must be connected to a constant 12V power source (see page 8).



## Access the V-AI12 Settings menu

- Press the camera touchscreen.
- Enter the default PIN number 3333.
- The camera is now unlocked, and the Settings menu is now accessible.



### ***Calibrating the V-AI12's sensors***

The V-AI12 contains an internal accelerometer that detects unsafe driving events. The accelerometer is not calibrated in advance as the installation in every vehicle is different. Please follow the steps below to calibrate the accelerometer. Before you start, make sure that the vehicle is parked on a level surface.

1. Turn on the vehicle's ignition.
2. Check that the camera is on.
3. Press the touchscreen and enter the security PIN.
4. Enter the 'Settings' menu.
5. Select 'Calibrate'.

\* The calibration process takes about a second to complete. **NOTE:** Recalibration is required when transferring the dashcam to another vehicle.

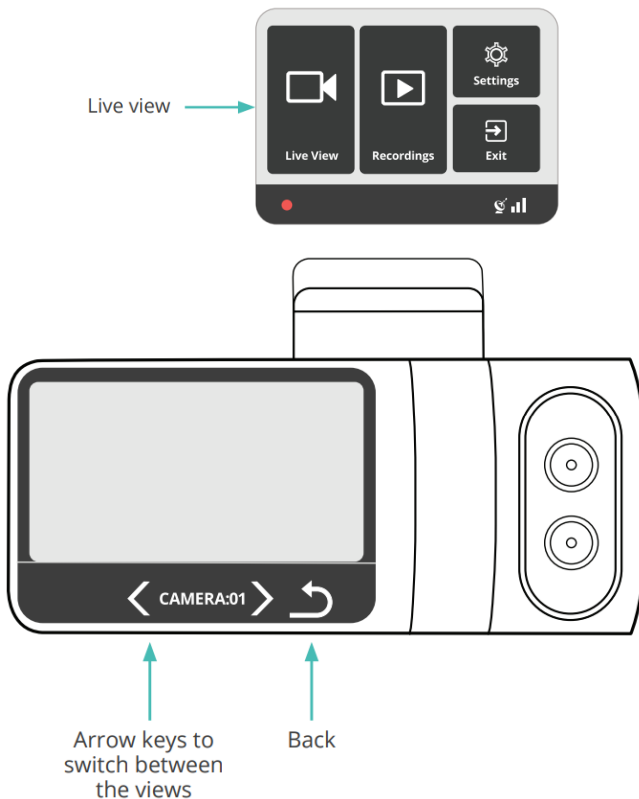
### ***Settings menu***

Enter the 'Settings' mode in the main menu to set your camera:

- WiFi Hotspot
- Video Preset
- Select APN
- Add APN
- Driver Camera
- Text Overlay
- Distracted Driver Notifications
- In-Cabin Recording
- Driver Position
- Date Format
- Speed in MPH
- Audio Alarms
- Live Streaming Notifications
- Change PIN
- Change Driver PIN
- Calibration
- Brightness
- Serial Number
- Format SD Card
- Power Off

## View live video

- Enter the 'Live View' mode in the main menu.
- The live video will be displayed on the screen.
- Use the arrow keys below the screen to switch between the road- and cabin-facing cameras.
- Use the back arrow button to return to the main menu.



## View recorded videos\*

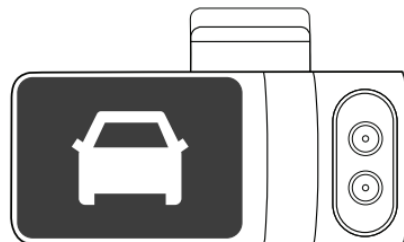
- Enter the 'Recordings' mode in the main menu.
- All the recorded videos on the SD card will be displayed in a list, sorted by date and time.
- Use the arrow buttons to scroll through the list.
- Select the video you would like to view and then click the 'Play' button.



*\*Access to view recorded videos is based upon permissions set by your organization.*

### **Driving alerts\***

- A white vehicle icon will be displayed on the screen while driving.
- In case of a risky driving event such as a sharp turn or unsafe driver behavior, the car icon will turn red, indicating a visual alert for the driver.
- In addition, the camera will deploy a sound alert.



*\*Please note that the Vista camera is a driver aid only and is not a substitute for a safe, conscientious driver. The camera cannot compensate for a driver that is distracted, inattentive, or impaired by fatigue, drugs, or alcohol. Whether or not the Vista camera is in use, it is always the responsibility of the driver to take appropriate corrective action. Never wait for the camera to provide a warning before taking measures to avoid an accident. Failure to do so can result in serious personal injury or death, or severe property damage.*

Create your Vista cloud account

- Open your internet browser and navigate to **<http://powerfleet.com>**
- Click on the **'Login'** button at the top right menu.
- If you have a Vista account, then simply login to your account.
- If you do not have a Vista account, click on **'Signup'** below the login button.
- Create your account by entering the following:
  - Your email
  - A password
  - The device's IMEI\* number
  - Your organization name

*\* The IMEI number can be found on the sticker on the camera itself or on the back of the carton box the camera arrived in.*

### ***Connect the V-AI12 to your account***

- Turn on your car vehicle's ignition switch.
- After about a minute you should see the Vista's IMEI\* number in the list of devices with a green icon next to it, indicating the camera is online.

*\*The IMEI number can be found on the sticker on the camera itself or on the back of the carton box the camera arrived in.*

## COMPLIANCE STATEMENTS

This device complies with part 15 of the FCC Rules. Operation is subject to the following two conditions: (1) This device may not cause harmful interference, and (2) this device must accept any interference received, including interference that may cause undesired operation. Any changes or modifications not expressly approved by Vista could void user's authority to operate the equipment. Caution: Exposure to radio frequency radiation. To comply with FCC RF exposure compliance requirements, for mobile configurations, a separation distance of at least 20 cm must be maintained between the antenna of this device and all persons. This device must not be co-located or operating in conjunction with any other antenna or transmitter.



Industry Canada Notice: This device complies with Industry Canada license-exempt RSS standard(s). Operation is subject to the following conditions: (1) This device may not cause harmful interference, and (2) this device must accept any interference received, including interference that may cause undesired operation.

This Class B digital apparatus complies with Canadian ICES-003.

Cet appareil est conforme aux normes RSS exemptes de licence d'Industrie Canada. Don utilisation est soumise aux deux conditions suivantes: (1) Cet appareil ne doit pas causer d'interférences nuisibles et (2) cet appareil doit accepter toute interférence reçue, y compris les interférences susceptibles de provoquer un fonctionnement indésirable.

Cet appareil numérique de la classe B est conforme à la norme NMB-003 du Canada.

CAUTION: Exposure to Radio Frequency Radiation. To comply with RSS 102 RF exposure compliance requirements, for mobile configurations, a separation distance of at least 20 cm must be maintained between the antenna of this device and all persons. This device must not be co-located or operating in conjunction with any other antenna or transmitter.

Pour se conformer aux exigences de conformité 102 RSS RF exposition, pour des configurations mobiles, une distance de séparation d'au moins 20 cm doit être maintenue entre l'antenne de cet appareil et toutes les personnes. Cet appareil ne doit pas être co-localisés ou fonctionnant en conjonction avec une autre antenne ou transmetteur.

Need Further Help?

Visit our support portal: [support.powerfleet.com](https://support.powerfleet.com)

[powerfleet.com](https://powerfleet.com)

Vista Dashcam V-AI12 1 Year Limited Warranty

Warranty: [powerfleet.com/warranty](https://powerfleet.com/warranty) End User License Agreement: [powerfleet.com/eula](https://powerfleet.com/eula) Privacy: [powerfleet.com/privacy](https://powerfleet.com/privacy)